

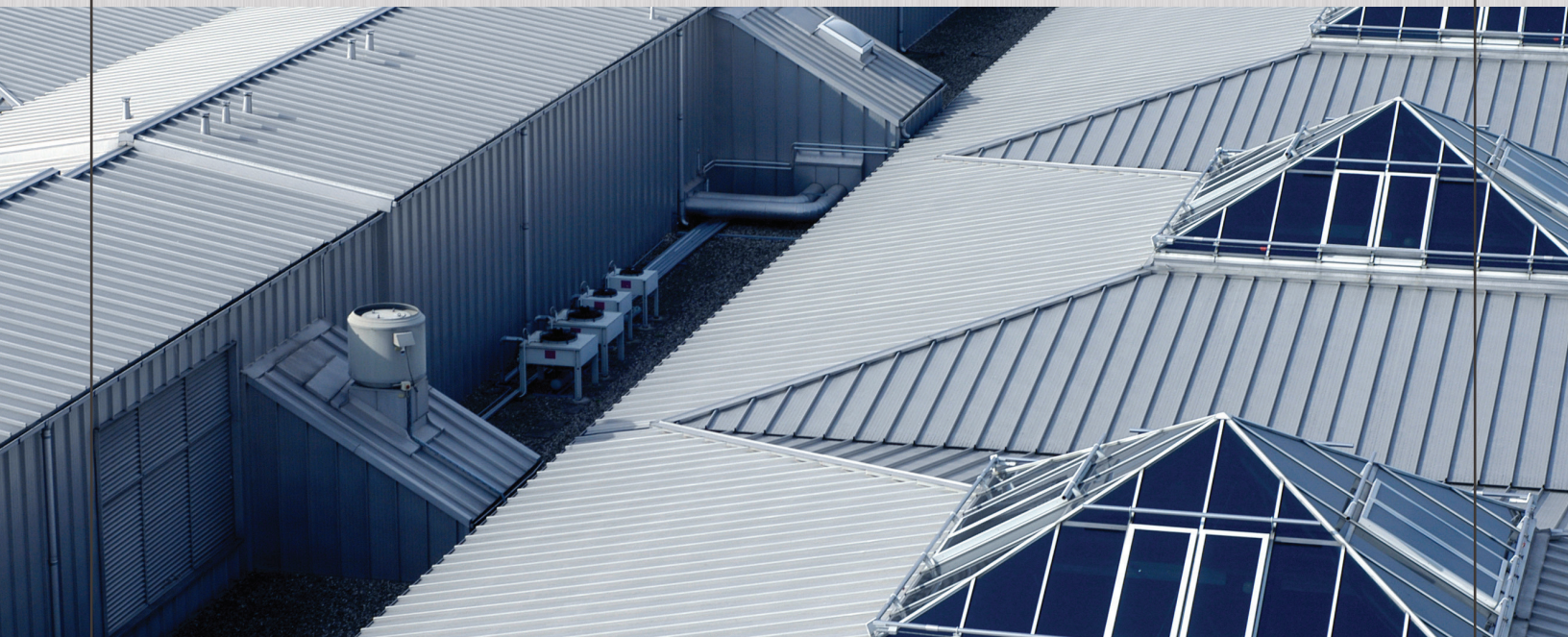


METALALLIANCE

A Value Added Supplier of Metals

Weathertight Warranty Program

by
RoofingWarrantyLLC



“At Metal Alliance we believe in being an active partner to ensure that every roof system specified with our products provides lasting peace of mind to the building owner.”



Get the Coverage you Need.

'All weathertight warranties are underwritten, issued and administered by Roofing Warranty, LLC. Weathertight warranties are issued solely to the original building owner purchasing products sold by Metal Alliance Supply, LLC and manufactured and installed by third party contractors that are part of the Metal Alliance Certified Manufacturer and Installer networks. Metal Alliance Supply, LLC does not offer, sell, underwrite or participate in any weathertight warranties sold by Roofing Warranty, LLC. For full warranty details, including eligibility and exclusions, contact Roofing Warranty, LLC, or Metal Alliance. Weathertight warranty availability is subject to change without notice at any time.

Why Choose a Weathertight Warranty?

Building owners want lasting peace of mind that their metal roof is well-built and will continue to perform long after project completion. A Weathertight Warranty (WTW) provides a guarantee against water leaks by ensuring the use of a quality metal roofing system, good roof geometry, proven installation details, project oversight and installer accountability. In the unlikely event a leak develops, a WTW protects the building owner by covering the repairs needed to return the roof to a weathertight condition.

Introducing Metal Alliance Weathertight Warranties

by
RoofingWarrantyLLC

Our goal is that every metal roof system that starts with our products is properly designed and installed to provide many years of service to the building owner. As part of that commitment we are proud to offer the Metal Alliance Weathertight Warranty Program by Roofing Warranty, LLC.

Weathertight warranties (WTW) from Roofing Warranty, LLC are provided exclusively through Metal Alliance 5-Star Partners. 5-Star Partners are carefully selected certified installers who consistently demonstrate a high degree of quality workmanship and a strong commitment to customer satisfaction.

Featuring flexible terms and inspections at key project milestones, each weathertight warranty is customized to meet the specific needs of your project resulting in valuable benefits to the installer, manufacturer and the building owner:

- ✓ **Project oversight including appropriate panel and material selection and roof inspections**
- ✓ **Flexible terms from 5 to 25 Years and pricing to fit any budget**
- ✓ **Provide value-added services to stand out against the competition**
- ✓ **Access to large and specialty projects**
- ✓ **Investment protection against poor workmanship and substandard materials**



All WTWs are issued on a per project basis by Roofing Warranty, LLC to the building owner through a joint responsibility agreement with the Metal Alliance 5-Star Partner.

Flexible Programs for Reliable Protection

With flexible coverage terms and pricing to fit almost any budget, Weathertight Warranties from Roofing Warranty offer you and the building owner the material and labor coverage that's right for your project.

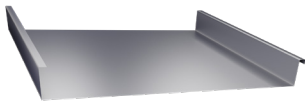
WTW Type	No Dollar Limit (NDL)		Limited to Installed Contract Value (LICV)		Limited Dollar Value (LDV)	
	Covers the entire cost of materials and labor for repair of an affected roof with no dollar limit. An NDL Weathertight Warranty is also not limited or capped by a single issue should multiple events occur during the term of the warranty.		A LICV Weathertight Warranty covers materials and labor required to repair the roof until the dollar amount that was paid for the original metal roof material and installation is reached.		The most economical option, an LDV Weathertight Warranty provides a fixed dollar amount per sq. ft. for roofing material of an affected roof. This option does not cover labor required to repair the roof.	
Coverage Material/Labor	 AND		 AND		 ONLY	
WTW Term	\$ PER SF	MIN. FEE [†]	\$ PER SF	MIN. FEE [†]	\$ PER SF	MIN. FEE [†]
25-yr	0.43/SF	\$5200	0.34/SF	\$4000	0.28/SF	\$3000
20-yr	0.40/SF	\$4200	0.31/SF	\$3300	0.25/SF	\$2500
15-yr	0.32/SF	\$3100	0.28/SF	\$2700	0.23/SF	\$1900
10-yr	0.28/SF	\$2300	0.26/SF	\$2000	0.21/SF	\$1700
5-yr	0.22/SF	\$1700	0.20/SF	\$1700	0.18/SF	\$1200
Max. Coverage*	NO DOLLAR LIMIT		ORIGINAL \$ COST/SF		ORIGINAL \$ COST/SF MATERIAL ONLY	

**Total coverage limited to the square feet of installed roofing material. Original \$Cost/SF determined upon submission of all completed and paid project invoices to Roofing Supply, LLC. WTWs cover repair and/or replacement of a roof that leaks; they do not cover incidental damage to the building or its contents. Additional surcharges may be applied to cover project costs and demands based on unprecedented details. †Warranty fees do not include inspections which are based on travel and project scope. The minimum inspection fee is \$1,900 per inspection. Weathertight warranty pricing and availability is subject to change without notice at any time.

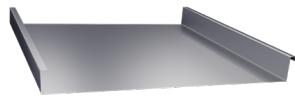
Eligible Metal Roofing Systems

Weathertight warranties are available on commercial, industrial and government projects. All job materials must be purchased from Metal Alliance or an approved supplier and manufactured by a Certified Metal Alliance Manufacturer (Advantage Partner).

The following standing seam profiles are eligible to be considered for a Metal Alliance Weathertightness Warranty.*



200MS All Seam



150MS All Seam



175SL All Seam



155SL All Seam



150SL All Seam



145SL All Seam



100SL All Seam

*Certain factors that may affect a panel's eligibility include project design, environmental conditions or building geometry.



INSPECTIONS ARE THE CORNERSTONE OF THE WTW PROCESS

Roof inspections are essential to the success of the Weathertight Warranty Program and provide specifiers and building owners with the peace of mind their project requires. To ensure a well-built, leak-free roof, each inspection is designed to certify that the installation is completed using the materials, quality workmanship and details specified for the project. At a minimum, each project will require:

- ✓ Orientation Inspection
- ✓ In-Progress Inspections[†]
- ✓ Final Inspection

[†]Minimum number of In-Progress Inspections is one(1) with average project requiring two (2). However the timing and total number of In-Progress Inspections required will depend on WTW type and size and complexity of the project.

WTW Frequently Asked Questions

What makes the Metal Alliance Weathertight Warranty by Roofing Warranty, LLC different from standard weathertight warranties offered by other companies?

Many standard weathertight warranties do not include the oversight of on-site inspections. Each WTW project that receives a WTW from Roofing Warranty, LLC has passed an independent expert inspection at several key milestones during installation certifying a well-built and leak-free roof.

Who is eligible to participate in the Metal Alliance Weathertight Warranty Program?

Weathertight Warranties by Roofing Warranty, LLC are available exclusively to certified installers that are part of the Metal Alliance 5-Star Building Partner program. To apply, go to www.metalalliance.com/weathertight and complete a Request for Quotation.

How do I become a Metal Alliance 5-Star Building Partner?

5-Star Partners are certified installers who consistently demonstrate a high degree of quality workmanship and a strong commitment to customer satisfaction. Contact your Metal Alliance sales representative for more information on how to become a 5-Star Building Partner.

I am a 5-Star Partner. Are all of my projects eligible for a Weathertight Warranty?

Weathertight warranties are available for projects that use all job materials purchased from Metal Alliance or an approved Metal Alliance supplier, are manufactured by a Metal Alliance certified manufacturer (Advantage Partner), and installed by a Metal Alliance certified installer (5-Star Partner).

How do I find a Metal Alliance Advantage Partner to manufacture the metal panels for my job?

If you are a 5-Star Partner and need a list of approved certified manufacturers (Advantage Partners), contact your Metal Alliance sales representative. 5-Star partners that manufacture their own metal panels must also qualify as an Advantage Partner for your project to be eligible for a WTW.

Does my project have to be pre-approved for a Weathertight Warranty?

Yes, shop drawings and other criteria must be reviewed and approved prior to the start of the project. It is also recommended that materials not be ordered prior to approval. To apply, go to www.metalalliance.com/weathertight and complete a Request for Quotation.

Is trim included in the Weathertight Warranties?

Yes, with certain exceptions such as gutters and other related rain gear, dead valleys, etc.

What metal panel systems are eligible for a Weathertight Warranty?

The following standing seam profiles for commercial, industrial and government installations are eligible for a Weathertight Warranty:

- | | | | |
|----------------|----------------|----------------|----------------|
| ✓ 200MSAllSeam | ✓ 175SLAllSeam | ✓ 150SLAllSeam | ✓ 100SLAllSeam |
| ✓ 150MSAllSeam | ✓ 155SLAllSeam | ✓ 145SLAllSeam | |

What roof applications are not warrantable even if the panel system is eligible for the Metal Alliance Weathertight Warranty Program?

Custom sheet metal roof applications such as domes, tapered panels or roof designs with drainage problems are not warrantable applications for the Metal Alliance Weathertight Warranty Program. Other factors that may affect a panel's eligibility include project design, environmental conditions or building geometry.

What products/accessories must be used for my project to be approved and pass inspection for a Weathertight Warranty?

All products used in a Weathertight Warranty project must be purchased through Metal Alliance, a Metal Alliance Advantage Partner, or an approved supplier. In the event a required item is not offered by the approved supplier, the product selected must be approved by Roofing Warranty, LLC prior to the start of the project.

What is the minimum roofing slope requirement for a Weathertight Warranty?

The standard minimum slope requirement is 3:12. Slopes as low as 1:12 may be accepted on a case-by-case basis provided structural mechanical seamed panels are used. These installations will be subject to a weathertight warranty fee surcharge.

What type of underlayment is required to qualify for a Weathertight Warranty?

At a minimum, a full peel-and-stick underlayment installation is required for approval. All proposed underlayment must be approved prior to start of each weathertight warranty project.

How does the installation of other equipment on the metal roof affect the weathertight warranty?

To support the common goal of having a long-lasting, leak-free roof, it's important for contractors and building owners to understand that any roof application that requires roof penetration or fastening, added either during or after installation such as antennae, satellite dishes, skylights, solar panels, or other such equipment, must be approved by the roof manufacturer and/or Roofing Warranty, LLC to ensure the proper materials and methods are used. Failure to get pre-approval will void the warranty. In addition, work must always be done by experienced and licensed contractors.

As a metal roofing installer, what are my responsibilities under the Weathertight Warranties once they are approved?

The installer is responsible for properly installing the roof using quality materials and workmanship in accordance with the details and proven standards specified and approved by the metal roof manufacturer and Roofing Warranty, LLC. The installer, together with Roofing Warranty, LLC guarantees that the roof will remain leak-free for the duration of the warranty. During the first 24 consecutive months of the warranty, the installer is solely responsible for covering any repairs resulting from a roof leak.

How will I know if there are deficiencies in the roof installation?

Copies of each inspection report will be sent to the installer listing any deficiencies and the corrective action required. Final approval for a weathertight warranty will not be issued until the project passes Final Inspection.

How does the billing process work for the Metal Alliance Weathertight Warranty Program?

Each approved WTW project will require a paid deposit prior to the first inspection. The deposit amount will vary depending on project scope and schedule. The balance of all WTW fees due, including all inspection fees must be paid prior to the issuance of a weathertight warranty.

When will the final Weathertight Warranty be issued to the building owner?

Weathertight Warranty Certificates will be issued to the building owner after ALL items listed below have been completed:

- ✓ The project passes Final Inspection
- ✓ All parties to the WTW have executed the Weathertight Limited Liability Warranty Agreement which includes the installer, Roofing Warranty, LLC, and the building owner.
- ✓ The installer has executed the Contractor/Installer Certification and provided to Roofing Warranty, LLC
- ✓ All WTW fees, including inspection fees have been paid in full

What responsibilities does the building owner have once the Weathertight Warranty Certificate is issued?

The building owner is responsible for roof maintenance and documentation in accordance with the WTW Agreement and Preventative Maintenance Manual, and immediately notifying Roofing Warranty, LLC if a leak occurs.

What happens if the roof system leaks during the term of the Warranty?

In the unlikely event a leak occurs, the building owner should always notify Roofing Warranty, LLC immediately. If the roof system was properly installed and the leak occurs during the first 24 months of the warranty period, (or is extended by successive 24-month periods from the date of leaks reported within the relevant 24-month period), Roofing Warranty will coordinate with the installer who is responsible for repair of the roof in accordance with the terms of the Weathertight Warranty Agreement. If the leak occurs after the first 24 months or any successive 24-month extensions, but within the remaining warranty term, Roofing Warranty, LLC will coordinate repair in accordance with the terms of the Weathertight Warranty Agreement.



METALALLIANCE

A Value Added Supplier of Metals

Weathertight Warranty Program

by
Roofing Warranty LLC



GET STARTED NOW.

Visit us at metalalliance.com/weathertight

Call us today at 844.638.2548

Metal Alliance Supply, LLC • 2120 SW Poma Drive Palm City, FL 34990 • Additional Locations in Maryland and Texas

Roofing Warranty, LLC offers weathertight warranties solely to the original building owner purchasing products sold by Metal Alliance Supply, LLC and manufactured and installed by third party contractors that are part of the Metal Alliance Certified Manufacturer and Installer networks. All weathertight warranties are issued and administered by Roofing Warranty, LLC or its agents. Metal Alliance Supply, LLC does not offer, sell, underwrite or participate in any weathertight warranties sold by Roofing Warranty, LLC.